

Supplementary Material

**High-Pressure Homogenization treatment to recover bioactive
compounds from tomato peels**

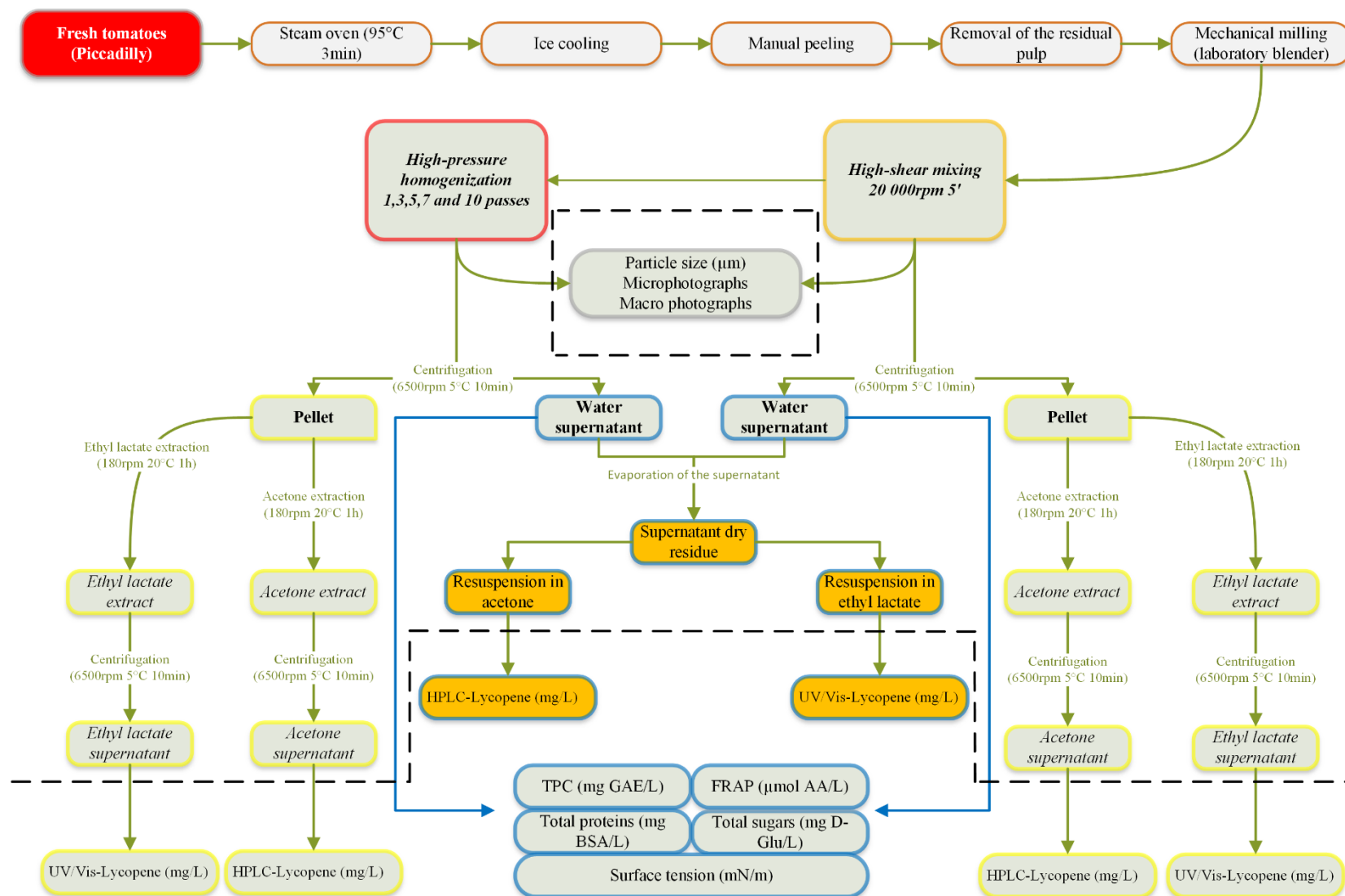


Figure S1. Experimental workflow for sample preparation, treatment, and analysis.

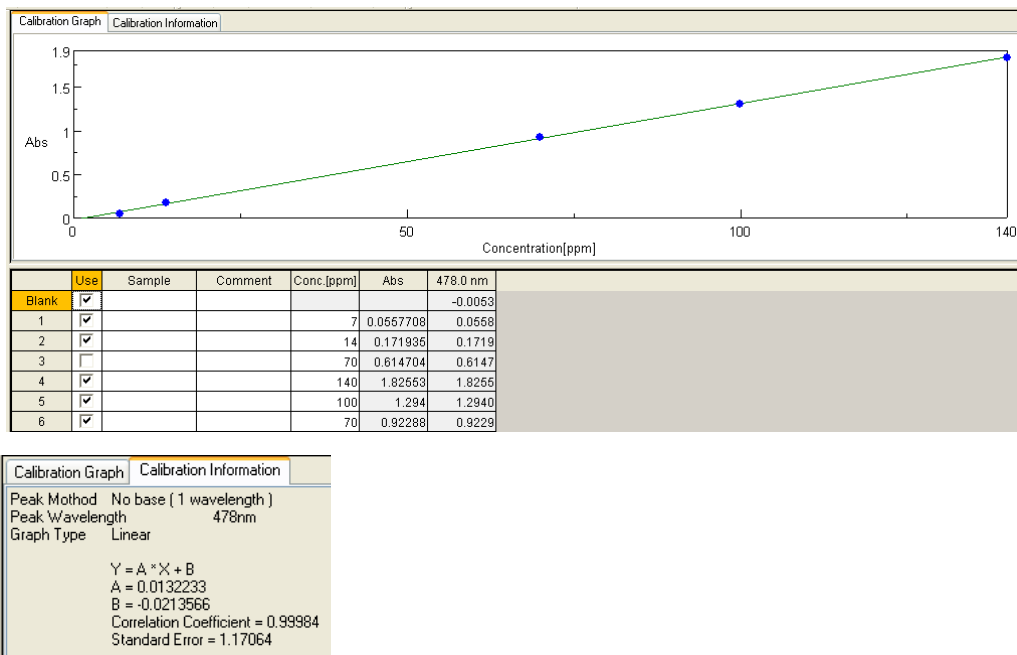


Figure S2. Calibration curve of lycopene (mg/L) in ethyl lactate.

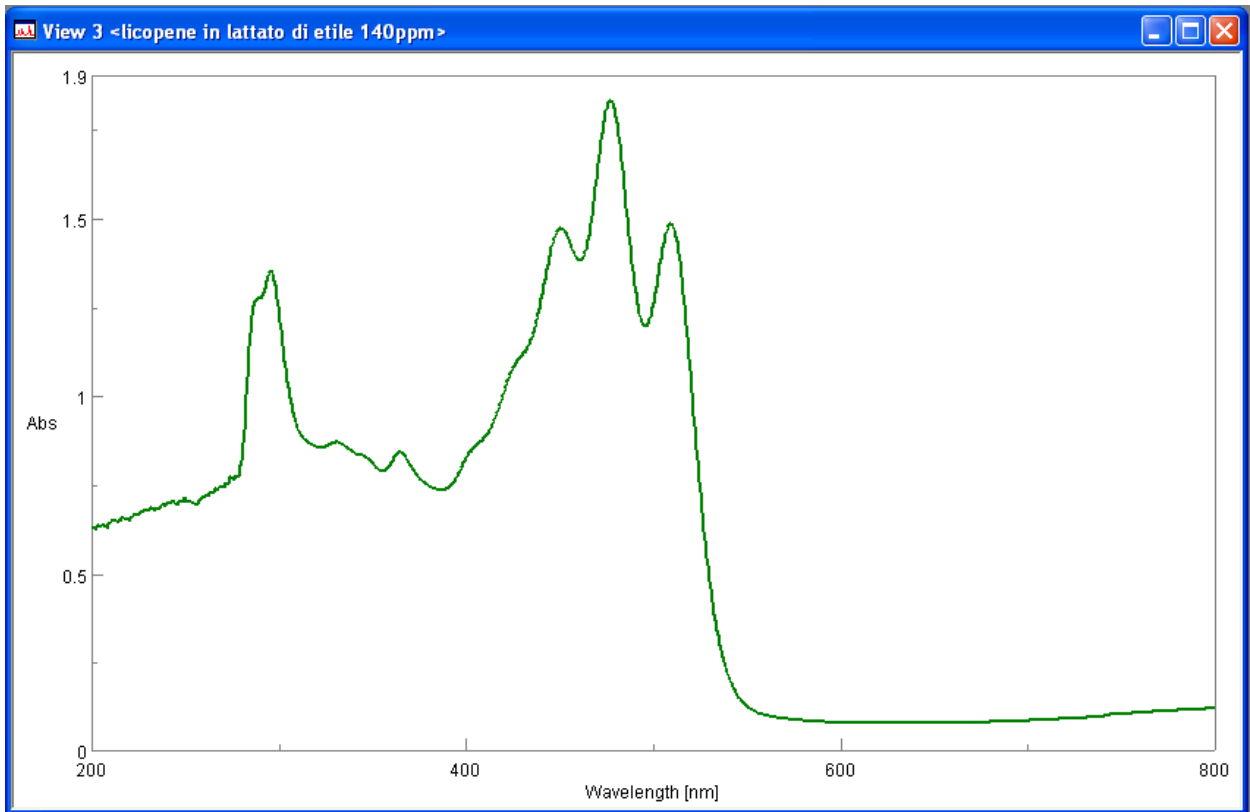


Figure S3. UV-Vis spectra of lycopene in ethyl lactate (140 mg/L).

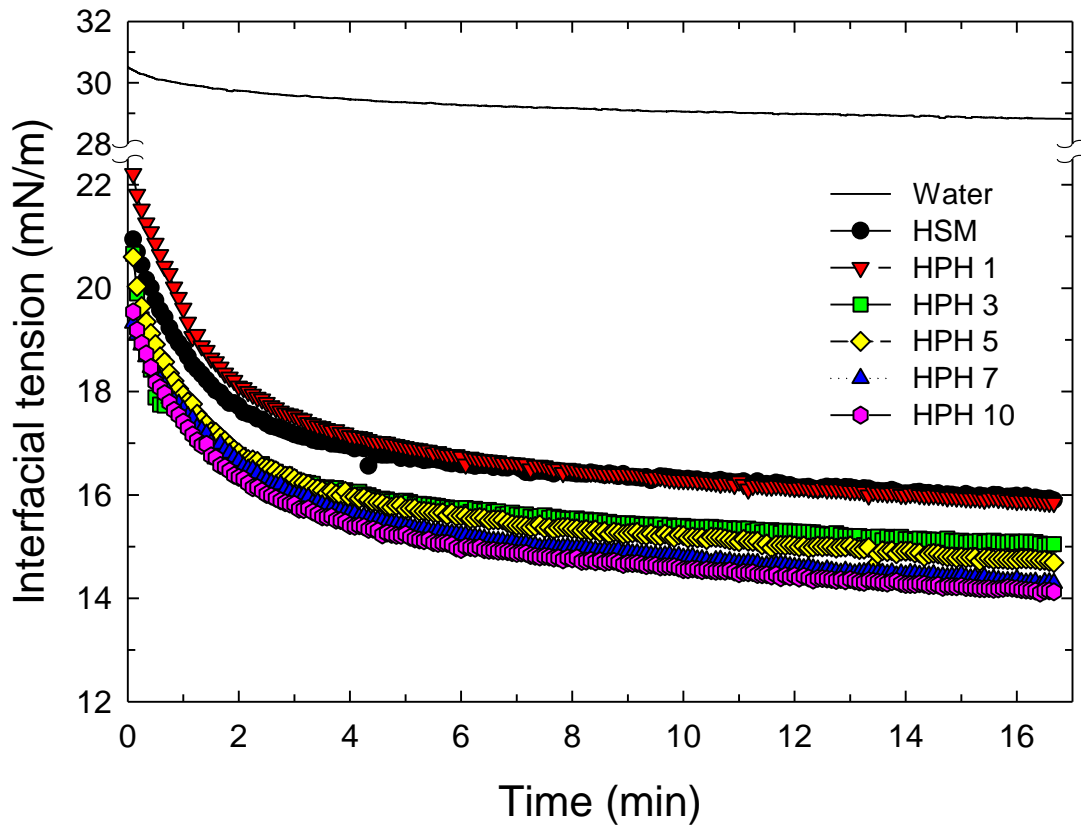


Figure S4. Interfacial tension of the supernatant of the suspensions treated by HSM (control) and HPH (1, 3, 5, 7 and 10 passes), as a function of the measurement time.